

CERTIFICATE OF LOCATION OF GOVERNMENT CORNER

East 1/4 Corner of Section 9, Township 107, Range 40W, 5th P.M.

STATE OF MINNESOTA, County of Murray

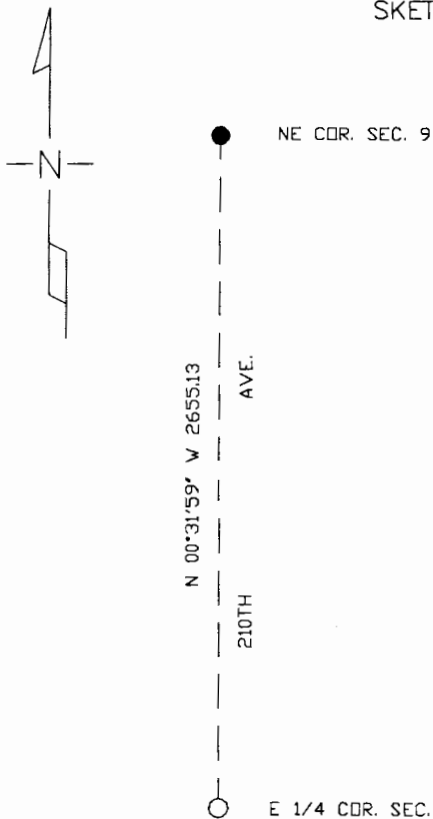
At the corner location shown on the sketch

On 6/4/04 found a a 6" X 10" stone 1.5' deep

left monument as found lowered monument, removed monument (explain)

On 6/4/04 placed a 1" Iron Pipe with survey cap 23008 directly over the top center of stone.

SKETCH OF REFERENCE TIES



MURRAY COUNTY COORDINATES
 NORTHING = 189973.13
 EASTING = 532450.33

NORTHING = 187318.11
 EASTING = 532475.03

Statement of evidence relative to this corner location is on back of page.

I hereby certify that this document and the data contained herein was prepared by me or under my direct supervision.

Perry L. Ziske 6-22-04
 SIGNATURE DATE

MN. REGISTRATION NO. 23008

Land Surveyor, Professional Engineer

County Surveyor, County Engineer

OFFICE OF THE COUNTY RECORDER

I hereby certify that this document was filed in the Co. Recorder's Office at _____ on the

_____ day of 6-23-04

County Recorder James V. Johnson
 By _____, Deputy

DOCUMENT NO. _____